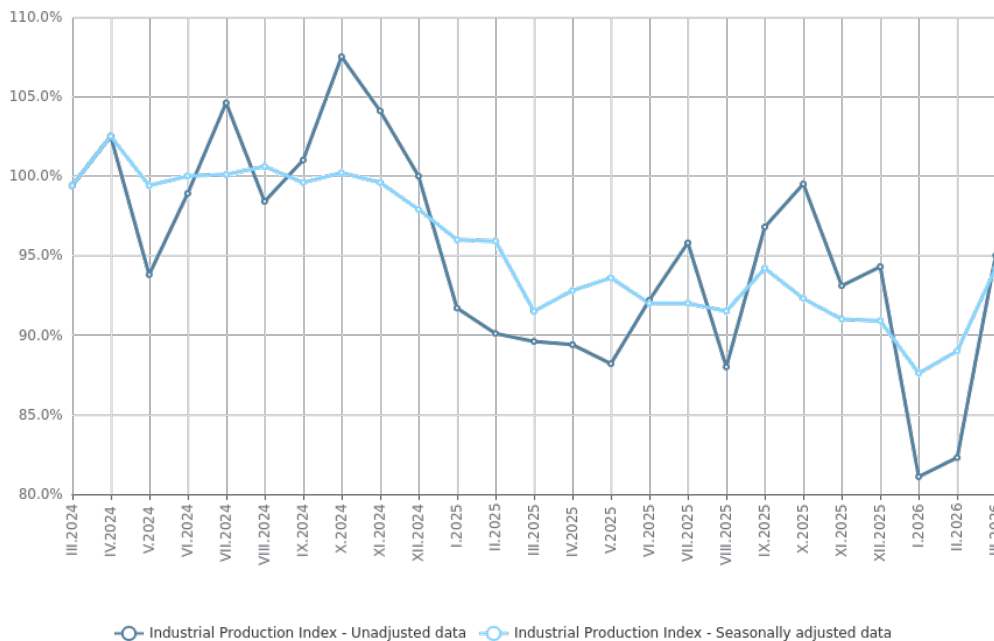




INDUSTRIAL PRODUCTION INDICES - MARCH 2026

The index of industrial production in March 2026 increased by 5.8% compared to the previous month. The data are preliminary and seasonally adjusted. Compared to March 2025, a growth of 4.8% was registered in the calendar-adjusted index of industrial production.

Figure 1. Industrial Production Indices (2021 = 100)



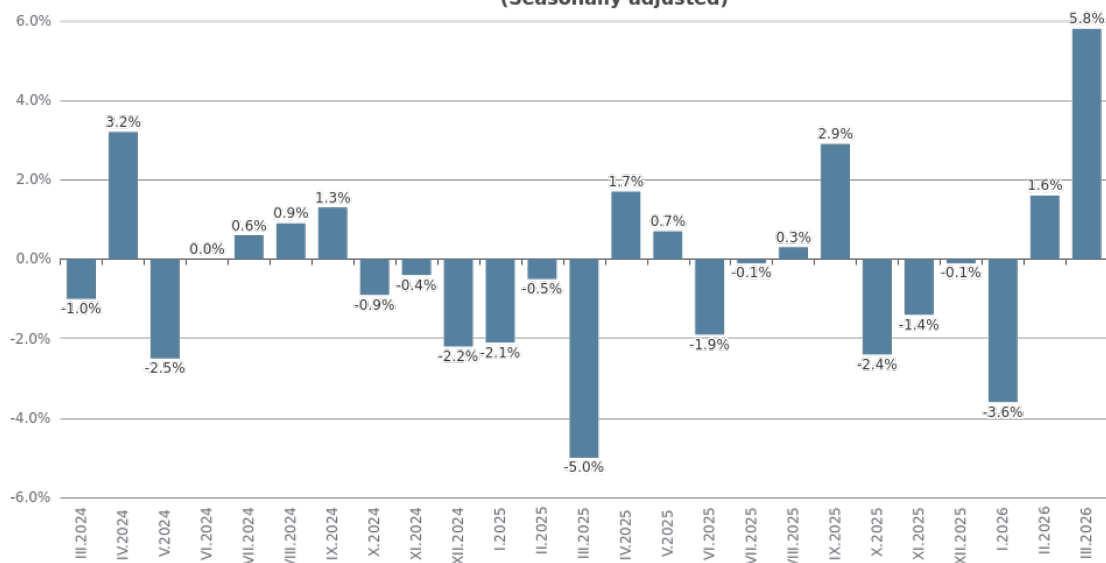
Monthly Changes

In March 2026 compared to February 2026, an increase was observed in the electricity, gas, steam and air conditioning supply - by 15.6%, and in the manufacturing industry - by 2.5%, while the mining and quarrying industry remained unchanged.

Significant growth in the manufacturing industry was recorded in manufacture of computer, electronic and optical products - by 23.6%, in the repair and installation of machinery and equipment - by 12.2%, in the manufacture of basic pharmaceutical products and pharmaceutical preparations - by 10.9%, and in the manufacture of wood and of products of wood and cork, except furniture; manufacture of articles of straw and plaiting materials - by 10.3%.

Decreases were registered in the manufacture of wearing apparel - by 8.3% and in the manufacture of other transport equipment - by 8.2%.

Figure 2. Changes of Industrial Production Indices compared to the previous month (Seasonally adjusted)



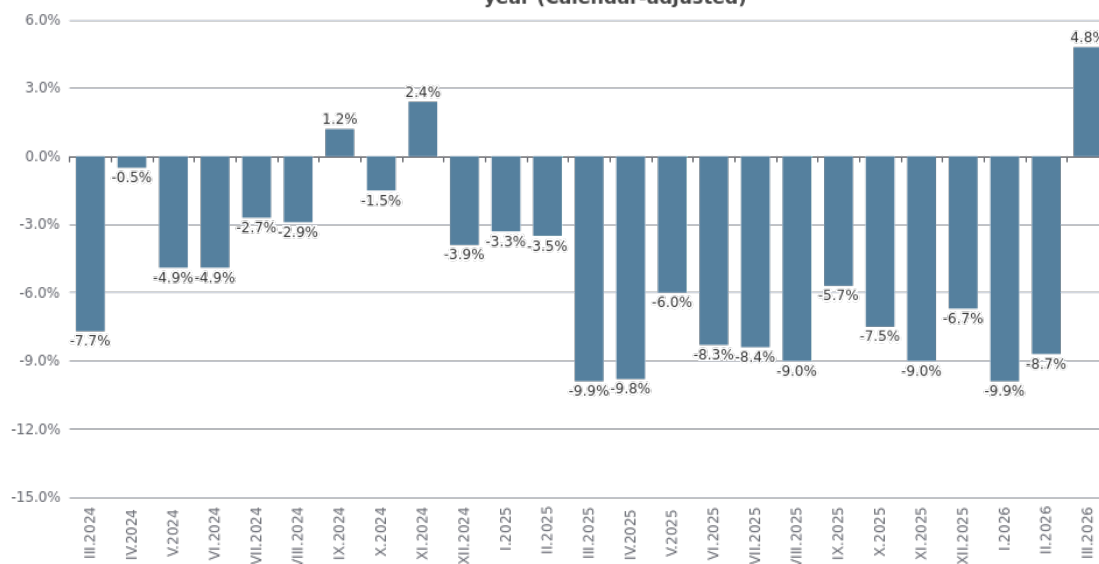
Annual Changes

On an annual basis, an increase in industrial production, calculated from calendar-adjusted data, was recorded in the electricity, gas, steam and air conditioning supply - by 35.6%, and in the manufacturing industry - by 4.0%, while a decrease was observed in the mining and quarrying industry - by 27.3%.

In the manufacturing industry, significant growth compared to March 2025 was registered in the manufacture of basic pharmaceutical products and pharmaceutical preparations - by 27.3%, and in the manufacture of tobacco products - by 23.4%.

Declines were recorded in the manufacture of leather and related products - by 24.1% and in the manufacture of motor vehicles, trailers and semi-trailers - by 17.5%.

Figure 3. Changes of the Industrial Production Indices compared to the same month of the previous year (Calendar-adjusted)



Methodological notes

The monthly indices of industrial production are calculated in accordance with the requirements of Regulation (EU) 2019/2152 of the European Parliament and of the Council on European Business Statistics.

In relation to the membership of Bulgaria in the euro area from the 1st of January 2026, the National Statistical Institute (NSI) is obliged to produce and publish Industrial Production Indices on the Non-domestic Market in the euro area and in the non-euro area. This is valid for all country members of the euro area.

The Monthly Industrial Production and Industrial Turnover Indices measure changes in production and turnover values of industrial enterprises. This information can be used to assess the current economic development and for short-term forecasts. Indices do not measure the actual production level; they aim to measure the average change in the value of production between two points in time. Indices are compiled based on information collected through a representative sampling survey on industrial enterprises. The sample covers enterprises with an annual turnover of more than 97% of the total turnover in the industry.

The Industrial Production Indices are calculated at a constant base year, that is to say they are weighted with the structure of the value added at factor costs in the base year.

Seasonal adjustment is a statistical method which eliminates the seasonal component of the time series.

Calendar adjustment is an adjustment for variations in the monthly data, caused by calendar effects, the different number of calendar and working days in the months, national holidays and outliers (for example, the presence of more non-working days in May could contribute to the decline in production in some activities).

Changes of Industrial Production Indices compared to the previous month							
							(Per cent)
Economic activities	NACE.BG - 2008	X.2025	XI.2025	XII.2025	I.2026	II.2026	III.2026*
Industry	B_TO_E36	-2.4	-1.4	-0.1	-3.6	1.6	5.8
Mining and quarrying	B	-13.0	22.9	-14.8	-18.8	-5.8	0.0
Mining of coal and lignite	B05
Extraction of crude petroleum and natural gas	B06
Mining of metal ores	B07	-5.5	8.3	-12.4	-13.5	-14.7	-0.7
Other mining and quarrying	B08	-7.1	4.9	6.1	-2.8	-0.5	7.5
Mining support service activities	B09
Manufacturing	C	-3.4	1.4	0.2	-4.3	4.2	2.5
Manufacture of food products	C10	-0.8	6.6	-0.1	-3.6	1.4	8.7
Manufacture of beverages	C11	-3.4	6.9	4.8	-5.4	4.5	1.0
Manufacture of tobacco products	C12	-17.5	3.2	25.2	12.0	-4.5	-5.3
Manufacture of textiles	C13	6.4	5.8	-8.2	-12.5	17.7	-5.7
Manufacture of wearing apparel	C14	4.4	-4.5	4.6	-1.4	-0.8	-8.3
Manufacture of leather and related products	C15	-6.5	-3.5	-0.7	-30.4	8.8	-2.6
Manufacture of wood and of products of wood and cork, except furniture; manufacture of articles of straw and plaiting materials	C16	-5.9	2.0	5.4	3.3	-12.7	10.3
Manufacture of paper and paper products	C17	1.5	-6.3	1.1	3.7	1.2	3.5
Printing and reproduction of recorded media	C18	1.2	-8.4	7.3	-3.7	5.0	-1.8
Manufacture of coke and refined petroleum products	C19
Manufacture of chemicals and chemical products	C20	-7.8	5.1	2.6	4.6	-1.4	-0.8
Manufacture of basic pharmaceutical products and pharmaceutical preparations	C21	-3.9	5.0	-11.3	7.8	5.9	10.9
Manufacture of rubber and plastic products	C22	-3.0	5.8	-6.2	5.8	1.2	0.7
Manufacture of other non-metallic mineral products	C23	-3.5	3.5	-7.0	-5.7	1.8	3.1
Manufacture of basic metals	C24	5.9	-1.1	-10.8	12.4	3.4	-5.5
Manufacture of fabricated metal products, except machinery and equipment	C25	-8.6	-12.3	8.6	-0.5	1.8	-6.9
Manufacture of computer, electronic and optical products	C26	-11.6	3.7	14.1	-17.5	1.8	23.6
Manufacture of electrical equipment	C27	-0.1	21.7	25.0	-39.8	9.1	9.2
Manufacture of machinery and equipment n.e.c.	C28	-1.3	1.9	5.5	-7.1	0.7	5.9
Manufacture of motor vehicles, trailers and semi-trailers	C29	2.9	-10.9	5.8	-10.2	0.6	1.2
Manufacture of other transport equipment	C30	8.7	-16.2	2.9	-7.7	4.6	-8.2
Manufacture of furniture	C31	4.3	-6.7	-2.1	0.3	1.1	-4.2
Other manufacturing	C32	7.1	-12.9	14.6	-20.5	12.6	-6.5
Repair and installation of machinery and equipment	C33	-22.4	11.8	-5.9	-1.1	1.8	12.2
Electricity, gas, steam and air conditioning supply	D	10.1	-34.5	29.9	0.7	-7.9	15.6
Electricity, gas, steam and air conditioning supply	D35	10.1	-34.5	29.9	0.7	-7.9	15.6
Seasonally adjusted.							
* Preliminary data.							
„...“ - Confidential data.							

Table 2

Changes of Industrial Production Indices compared to the same month of the previous year							
							(Per cent)
Economic activities	NACE.BG - 2008	X.2025	XI.2025	XII.2025	I.2026	II.2026	III.2026*
Industry	B_TO_E36	-7.5	-9.0	-6.7	-9.9	-8.7	4.8
Mining and quarrying	B	-10.7	12.5	-22.3	-23.4	-23.2	-27.3
Mining of coal and lignite	B05
Extraction of crude petroleum and natural gas	B06
Mining of metal ores	B07	-10.9	27.2	-12.4	-18.3	-22.0	-29.9
Other mining and quarrying	B08	-16.5	-12.8	2.3	-10.7	12.7	13.1
Mining support service activities	B09
Manufacturing	C	-6.2	-4.3	-1.2	-7.0	0.0	4.0
Manufacture of food products	C10	-21.9	-8.9	-9.7	-9.9	-0.3	8.2
Manufacture of beverages	C11	-14.9	-3.1	1.6	-5.9	0.8	6.2
Manufacture of tobacco products	C12	7.9	26.4	36.2	66.6	47.3	23.4
Manufacture of textiles	C13	-15.3	-0.6	-13.2	-18.7	-3.8	-8.2
Manufacture of wearing apparel	C14	-15.4	-24.1	-2.8	-5.1	-5.9	-11.4
Manufacture of leather and related products	C15	-4.3	-7.8	1.5	-33.3	-23.1	-24.1
Manufacture of wood and of products of wood and cork, except furniture; manufacture of articles of straw and plaiting materials	C16	-13.7	-13.6	-10.0	-2.5	-15.3	-2.6
Manufacture of paper and paper products	C17	-18.7	-23.3	-16.7	-2.3	-4.9	1.6
Printing and reproduction of recorded media	C18	-3.7	-14.4	-4.2	-8.4	0.4	-6.4
Manufacture of coke and refined petroleum products	C19
Manufacture of chemicals and chemical products	C20	-14.4	-18.4	-10.3	-1.4	0.5	0.7
Manufacture of basic pharmaceutical products and pharmaceutical preparations	C21	-2.7	17.2	-13.4	2.5	19.9	27.3
Manufacture of rubber and plastic products	C22	-6.4	-1.9	-10.5	1.3	3.5	3.9
Manufacture of other non-metallic mineral products	C23	12.3	13.3	-10.7	-18.1	-4.1	-4.8
Manufacture of basic metals	C24	-8.4	-6.4	-3.3	13.8	15.2	5.3
Manufacture of fabricated metal products, except machinery and equipment	C25	-6.3	-13.3	-2.2	-15.0	5.5	-14.2
Manufacture of computer, electronic and optical products	C26	4.0	3.4	21.1	14.9	0.2	13.9
Manufacture of electrical equipment	C27	-1.4	14.2	57.7	-7.1	6.3	17.3
Manufacture of machinery and equipment n.e.c.	C28	-1.2	8.1	11.7	1.6	-2.6	2.4
Manufacture of motor vehicles, trailers and semi-trailers	C29	13.0	-6.6	10.1	-17.8	-15.8	-17.5
Manufacture of other transport equipment	C30	-8.6	-17.7	-15.8	-23.3	-31.6	-13.8
Manufacture of furniture	C31	27.1	18.7	11.6	16.2	8.4	-9.6
Other manufacturing	C32	3.4	-4.5	0.6	-4.9	-10.0	-1.2
Repair and installation of machinery and equipment	C33	-24.8	5.9	-5.5	-16.9	-0.6	17.4
Electricity, gas, steam and air conditioning supply	D	-10.9	-43.4	-14.1	-18.5	-36.6	35.6
Electricity, gas, steam and air conditioning supply	D35	-10.9	-43.4	-14.1	-18.5	-36.6	35.6
Calendar-adjusted.							
* Preliminary data.							
„..“ - Confidential data.							

Table 3

Industrial Production Indices (Seasonally adjusted, 2021 = 100)													
NACE.BG - 2008	III.2025	IV.2025	V.2025	VI.2025	VII.2025	VIII.2025	IX.2025	X.2025	XI.2025	XII.2025	I.2026	II.2026	III.2026*
B_TO_E36	91.2	92.7	93.4	91.6	91.6	91.9	94.5	92.3	91.0	90.9	87.6	89.0	94.2
B	84.3	83.1	83.9	97.3	86.4	93.9	89.9	78.2	96.1	81.9	66.5	62.6	62.6
B05
B06
B07	98.6	95.1	91.4	105.0	101.3	105.2	108.7	102.8	111.3	97.5	84.3	71.9	71.4
B08	73.2	77.6	76.2	73.5	76.6	79.5	76.5	71.1	74.6	79.1	76.9	76.5	82.2
B09
C	101.4	99.6	101.6	99.2	101.1	101.7	103.9	100.3	101.8	102.0	97.6	101.7	104.3
C10	89.4	90.9	91.6	88.8	89.9	89.6	85.2	84.5	90.1	90.0	86.8	88.0	95.7
C11	95.0	96.7	95.3	94.5	91.0	90.6	92.2	89.0	95.1	99.7	94.3	98.5	99.4
C12	91.2	116.3	102.2	99.2	92.6	87.9	103.6	85.5	88.2	110.5	123.8	118.1	111.9
C13	53.3	54.3	51.6	47.8	54.9	52.4	48.4	51.5	54.5	50.0	43.8	51.5	48.6
C14	74.0	76.9	72.5	77.8	71.2	70.3	70.6	73.7	70.3	73.6	72.6	72.0	66.1
C15	59.5	67.8	65.1	63.2	57.6	63.9	68.5	64.1	61.9	61.4	42.7	46.5	45.3
C16	84.6	82.4	78.7	78.5	77.6	78.6	81.1	76.3	77.8	82.0	84.7	73.9	81.6
C17	74.7	73.9	71.5	70.3	72.5	71.2	71.7	72.8	68.2	69.0	71.6	72.4	74.9
C18	93.5	90.6	91.9	93.0	88.1	90.2	87.8	88.9	81.4	87.3	84.1	88.3	86.7
C19
C20	93.5	91.7	98.5	89.1	92.2	96.8	91.9	84.8	89.1	91.4	95.7	94.3	93.6
C21	114.1	108.3	110.8	127.0	115.3	124.4	123.8	118.9	124.9	110.8	119.4	126.4	140.2
C22	81.6	82.1	79.7	81.0	78.4	77.3	80.2	77.8	82.3	77.2	81.6	82.6	83.2
C23	103.2	95.3	106.5	103.8	106.6	105.7	107.5	103.8	107.5	99.9	94.2	95.9	98.9
C24	75.0	72.5	72.9	70.8	77.2	73.4	77.6	82.1	81.2	72.5	81.5	84.3	79.6
C25	179.5	167.7	170.0	144.9	170.0	179.9	188.8	172.6	151.4	164.4	163.5	166.5	155.1
C26	121.1	99.7	102.6	108.4	102.2	107.6	124.4	109.9	114.0	130.0	107.2	109.1	134.9
C27	98.9	108.5	101.7	98.7	96.8	98.8	102.9	102.8	125.2	156.5	94.3	102.8	112.2
C28	100.7	93.5	94.8	93.2	91.8	99.0	96.7	95.5	97.3	102.6	95.3	96.0	101.6
C29	116.2	115.0	120.7	113.1	112.6	104.6	108.9	112.0	99.8	105.6	94.8	95.4	96.5
C30	83.3	105.4	98.0	87.8	68.0	65.7	89.9	97.7	81.9	84.2	77.7	81.3	74.6
C31	97.3	89.7	93.6	86.2	89.3	94.3	98.7	102.9	96.0	94.1	94.3	95.3	91.3
C32	112.9	131.2	130.5	113.6	128.9	111.8	125.1	134.0	116.8	133.8	106.4	119.8	112.0
C33	103.9	109.3	99.9	117.0	118.4	125.8	131.5	102.1	114.1	107.4	106.3	108.2	121.4
D	47.8	73.5	67.7	63.2	63.1	53.8	62.3	68.6	44.9	58.4	58.8	54.2	62.6
D35	47.8	73.5	67.7	63.2	63.1	53.8	62.3	68.6	44.9	58.4	58.8	54.2	62.6
* Preliminary data.													
*** - Confidential data.													

Table 4

Table 4 Industrial Production Indices (Calendar-adjusted, 2021 = 100)													
NACE.BG - 2008	III.2025	IV.2025	V.2025	VI.2025	VII.2025	VIII.2025	IX.2025	X.2025	XI.2025	XII.2025	I.2026	II.2026	III.2026*
B_TO_E36	91.8	89.1	89.1	92.9	94.4	89.7	96.8	98.1	95.4	94.9	81.8	82.8	96.2
B	81.8	75.5	76.8	93.9	82.5	94.2	96.9	85.5	104.0	92.6	63.2	57.7	59.5
B05
B06
B07	95.4	90.6	91.4	113.6	96.5	112.6	117.7	97.8	122.5	108.7	75.5	66.1	66.9
B08	69.6	76.1	79.2	78.6	80.5	83.5	81.4	79.9	83.8	80.4	56.1	59.4	78.8
B09
C	103.7	98.0	100.7	103.3	104.9	98.4	106.9	108.4	106.5	101.4	86.9	93.2	107.9
C10	88.7	87.6	90.3	89.2	89.8	91.2	88.2	93.4	94.2	93.0	78.6	76.8	96.0
C11	86.4	93.0	97.1	113.1	111.3	110.5	103.5	81.4	87.6	96.5	70.1	73.1	91.8
C12	96.4	127.3	119.4	121.1	118.1	90.2	114.6	89.0	81.3	100.6	88.1	93.3	119.0
C13	56.6	54.0	54.9	50.9	56.4	43.8	49.2	54.7	58.9	44.7	38.7	52.1	52.0
C14	72.4	69.7	65.5	85.0	80.4	65.6	69.3	78.2	72.4	71.8	76.8	72.7	64.2
C15	62.5	67.3	62.0	67.9	61.9	51.2	68.7	71.5	71.4	57.7	41.8	45.0	47.5
C16	85.6	82.7	81.7	82.0	82.3	75.9	84.1	81.0	84.4	77.7	74.2	65.5	83.3
C17	77.0	71.0	71.1	74.0	76.6	66.4	72.0	81.2	73.4	62.5	67.6	67.4	78.3
C18	95.6	89.1	92.0	97.1	86.8	83.4	84.2	95.2	91.6	92.9	74.9	79.8	89.4
C19
C20	101.8	92.7	97.8	91.5	93.0	92.7	90.8	85.0	91.7	90.5	90.4	89.6	102.5
C21	125.0	106.2	107.2	141.8	112.1	116.1	116.2	125.9	131.2	110.1	116.8	115.3	159.1
C22	84.6	81.8	79.2	85.5	81.7	72.3	82.9	84.1	86.3	69.3	75.6	78.2	87.9
C23	103.3	96.1	112.9	109.0	115.6	108.7	113.1	113.7	115.3	92.2	69.5	79.8	98.3
C24	80.3	73.1	75.6	72.4	78.2	66.8	76.5	89.6	86.9	63.0	80.7	82.8	84.6
C25	180.7	169.5	166.6	147.3	182.9	177.7	192.5	184.0	164.0	169.5	130.7	147.3	155.1
C26	127.9	96.8	98.7	114.5	104.8	94.5	128.3	122.1	120.6	126.3	98.2	104.9	145.7
C27	102.5	107.9	95.5	106.1	100.2	91.4	105.8	108.7	128.2	136.6	85.2	102.0	120.3
C28	107.7	94.7	92.9	98.1	93.6	87.7	98.5	103.5	101.8	100.0	85.1	93.1	110.2
C29	125.6	114.9	119.4	116.5	106.6	92.1	108.1	119.4	106.6	93.5	95.1	96.8	103.7
C30	81.7	110.4	98.0	91.3	62.9	59.4	88.7	112.8	79.9	75.5	62.5	85.0	70.4
C31	103.1	87.9	93.6	90.7	91.8	89.8	99.7	111.9	100.3	91.1	81.5	91.0	93.2
C32	113.2	127.5	129.1	129.0	130.5	110.0	130.3	149.0	124.1	123.1	90.5	105.6	111.9
C33	103.3	99.3	93.6	120.6	120.0	123.3	141.0	106.5	124.2	141.9	78.4	91.4	121.3
D	53.4	63.4	51.3	52.4	59.8	52.6	58.0	65.8	49.1	70.2	71.1	57.5	72.3
D35	53.4	63.4	51.3	52.4	59.8	52.6	58.0	65.8	49.1	70.2	71.1	57.5	72.3
* Preliminary data.													
*** - Confidential data.													